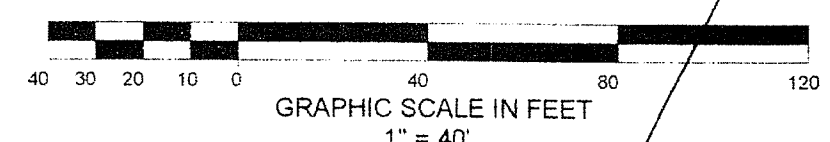
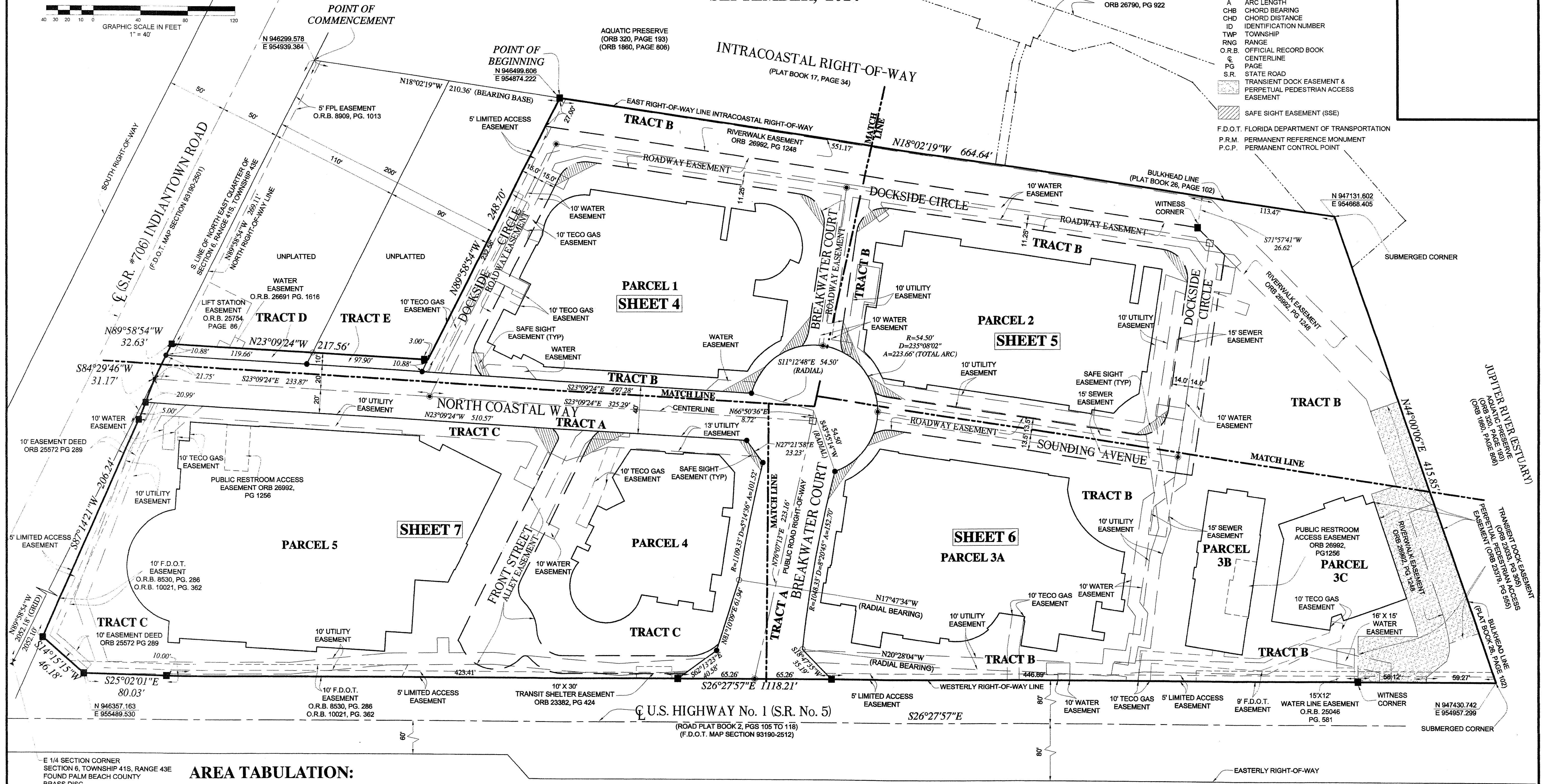


# HARBOURSIDE, P.U.D.

LYING IN SECTION 6, TOWNSHIP 41 SOUTH, RANGE 43 EAST,  
TOWN OF JUPITER, PALM BEACH COUNTY, FLORIDA  
SEPTEMBER, 2014



- LEGEND**
- SET 4"x4" CONCRETE MONUMENT (P.C.P.) LB# 2799
  - SET 4"x4" CONCRETE MONUMENT (P.R.M.) LS# 2439
  - SET MAG NAIL & DISC (P.C.P.) LB# 2799
  - SET MAG NAIL & DISC LB# 2799 (TRACT CORNERS)
  - SET 5/8" IRON ROD & CAP LB# 2799 (TRACT CORNERS)
  - R RADIUS
  - D DELTA ANGLE
  - A ARC LENGTH
  - CHB CHORD BEARING
  - CHD CHORD DISTANCE
  - ID IDENTIFICATION NUMBER
  - TWP TOWNSHIP
  - RNG RANGE
  - O.R.B. OFFICIAL RECORD BOOK
  - C CENTERLINE
  - PG PAGE
  - S.R. STATE ROAD
  - TRANSIENT DOCK EASEMENT & PERPETUAL PEDESTRIAN ACCESS EASEMENT
  - SAFE SIGHT EASEMENT (SSE)
- F.D.O.T. FLORIDA DEPARTMENT OF TRANSPORTATION  
P.R.M. PERMANENT REFERENCE MONUMENT  
P.C.P. PERMANENT CONTROL POINT



E 1/4 SECTION CORNER  
SECTION 6, TOWNSHIP 41S, RANGE 43E  
FOUND PALM BEACH COUNTY  
BRASS DISC  
N 946298.923  
E 956891.547

**AREA TABULATION:**

PARCEL No.	SQUARE FEET	ACRES
PARCEL 1	31,256	0.718
PARCEL 2	28,517	0.655
PARCEL 3A	31,795	0.730
PARCEL 3B	8,636	0.197
PARCEL 3C	9,077	0.209
PARCEL 4	14,722	0.338
PARCEL 5	45,506	1.047
TRACT A	41,912	0.962
TRACT B	163,952	3.764
TRACT C	58,900	1.350
TRACT D	1,197	0.027
TRACT E	979	0.022
<b>TOTAL</b>	<b>434,452</b>	<b>9.974</b>

**KEY MAP SHEET 3 OF 7**

**DAILEY AND ASSOCIATES, INC.**  
Surveying and Mapping  
112 N. U.S. Highway No. 1  
Tequesta, FL 33469  
Phone: (561) 746-8424  
BUSINESS LICENSE: LB# 2799